

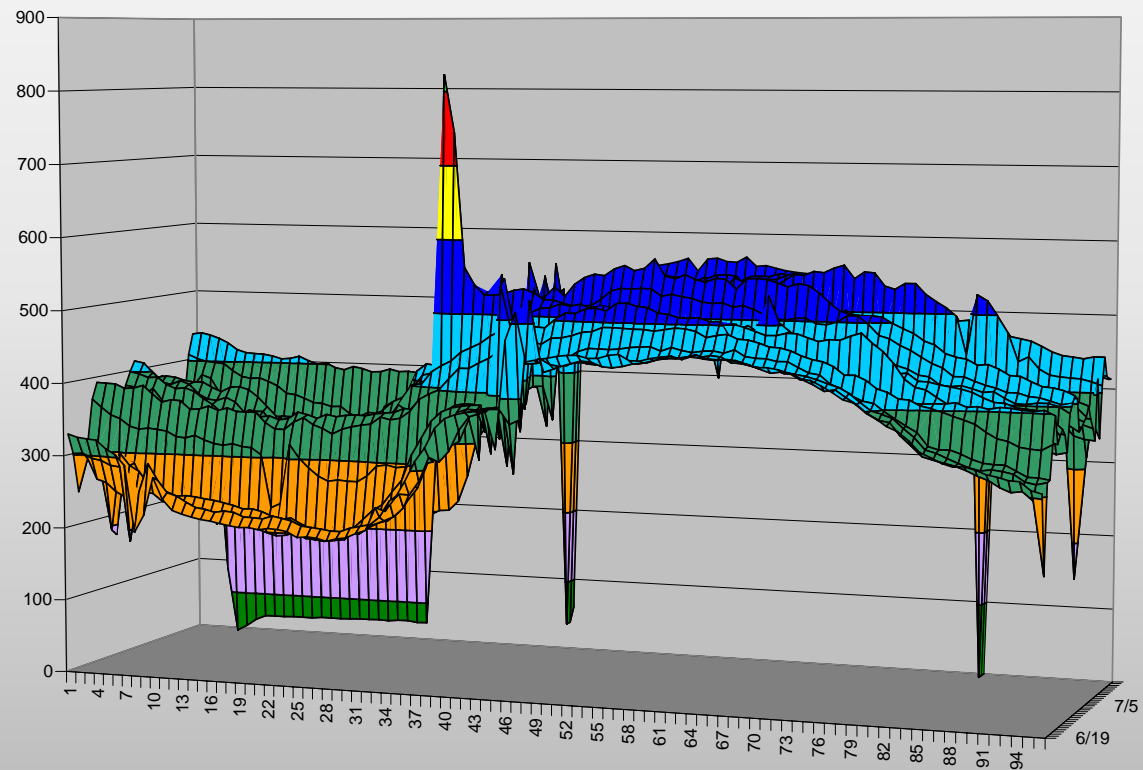
RETROCOMSM
Energy Strategies

REAL LIFE DISCOVERIES MAKE

THE CASE FOR COMMISSIONING

The Case for Commissioning

**3D Interval
Data revealed
an electrical
spike that
was costing
\$1,000's per
year**



The Case for Commissioning

**Out of Sight,
Out of Mind!**
**Ductwork
kinks can
multiply to
impact static
pressure &
fan efficiency**



The Case for Commissioning

**Outdoor Air
Sensor
placement can
be critical**



The Case for Commissioning

Static Pressure Sensor is too close to the supply fan to deliver appropriate control at the zone level



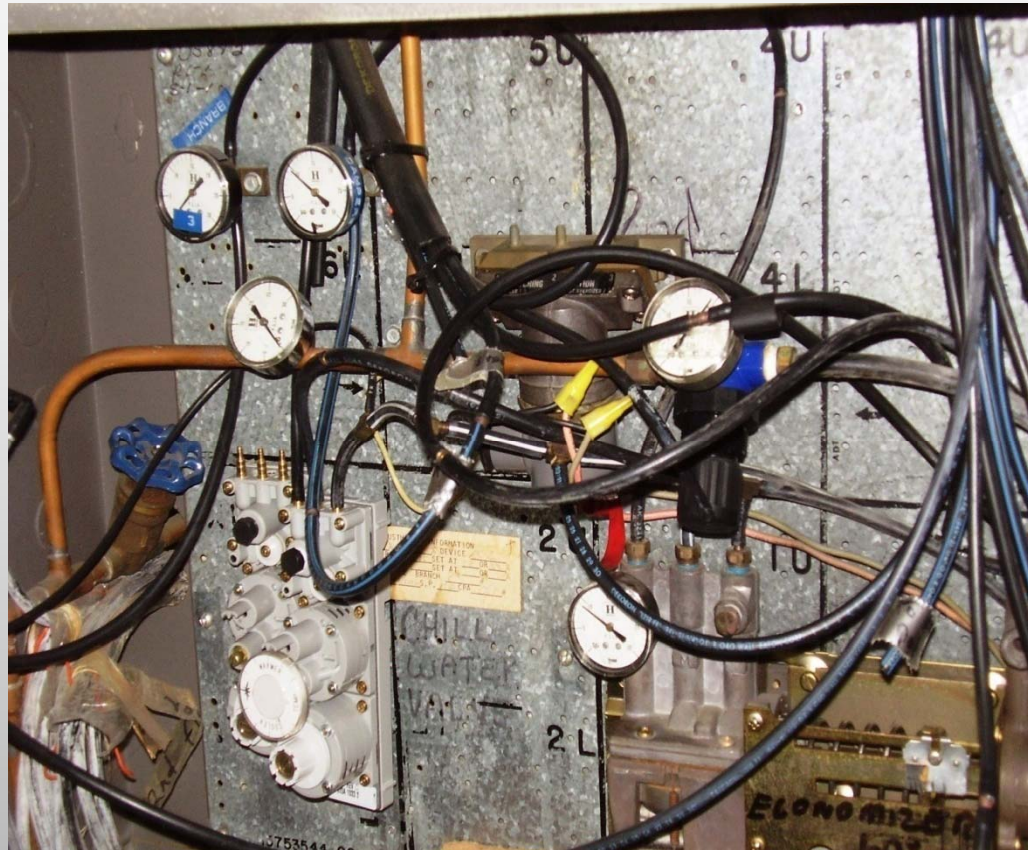
The Case for Commissioning

**Which valve is
controlling flow?**



The Case for Commissioning

According to the CEC 70% of the Economizers in the State are incorrectly sequenced



The Case for Commissioning

Maintenance failed to discover that the damper linkage was disconnected



The Case for Commissioning

The fan motor works fine now but the coil lost 20% of its capacity



The Case for Commissioning

**Apparently the
Photocell is not
functioning**



The Case For Commissioning

This chilled water system had a history of failing to meet load!



The Case for Commissioning

Many of the VFD's installed at this site were found to have status readings that had no relation to actual fan or motor function



The Case for Commissioning

There is no substitute for first hand observation. The inlet vanes on this fan were frozen in position.

